

20
25

MID-YEAR REPORT

RESEARCH EXCELLENCE*

*Based on self-reported member metrics



\$2,224,364

New funding from Core
Principal Members



55

New research
projects initiated



15

New medical school learners
involved in research



56

Publications



6

Member awards



10

Studies in research registry

COMMUNITY ENGAGEMENT



105,414

Engagements
(Social Media & Website)



14

Events hosted
(including workshops)



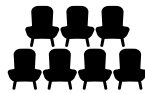
79

Student volunteers



102

Media stories



2,539

Event attendees
(outreach & hosted)



2,589

Volunteer hours provided

MEMBER SUPPORT



313

CITI Members



10

CANTRAIN Learners



552

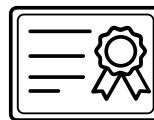
Active REDCap Users



8

Clinicians receiving direct
grant management support

GRANTS PROGRAM



32

WE-SPARK grants awarded



\$499,000

Grant funding
awarded



23

Grant sponsors

OUR STRATEGIC FOCUS

WE-SPARK supports all areas of health research while focusing on three priority areas: Behavioural and Brain Health, Cancer, and Community Health and Well-Being. These priorities guide our work and investments over the next five years as we continue to strengthen the health research ecosystem in Windsor-Essex.

VISION

A thriving and engaged research community driving innovation and advancements in health.

MISSION

Enhance the health, well-being, and care of people through transformative research, evidence-based interventions, and knowledge translation.



CORE MEMBER ACTIVITIES*

Our Core Member activities are comprised of Core Principal and Core Associate Members (CPM and CAM). CPMs are WE-SPARK researchers who are currently supported as a PI/Co-PI by a provincial or nationally funded health project, or an investigator initiated clinical trial. CAMs are WE-SPARK researchers who are actively engaged in research, but don't currently hold a provincial or nationally funded project.

39

Active Core Principal
Members

56

Peer-Reviewed Journal
Publications

\$2.2 M

Received in External
Grant Funding***

***Funding received by all core members

552

Active Collaborations
on Research Projects**

**Involvement on projects and publications

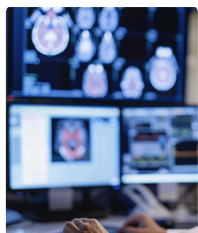
6

Awards & Accolades
Celebrated

*Metrics provided on behalf of our Core Members are based on self-reported successes.

20 WE-SPARK GRANT 25 RECIPIENTS

Team members and project details can be found at: <https://www.wesparkhealth.com/projects>.



Study of Automated Cancer Diagnosis Through Medical Imaging

Esam Abdel-Raheem



University of Windsor



Improving the Functional Independence Measure for Rehab Patients and Improving Patient Outcomes

Darwish Alami



University of Windsor

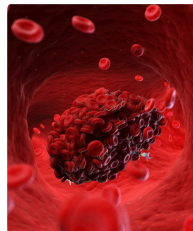


Program LEAD: How Can A Program Focused on Professional and Lifelong Learning Support the Mental Well-Being of HQP Engaged in Health Sciences Research?

Isabelle Barrette-Ng



University of Windsor



Integration of a Multidisciplinary Program for the Prevention of Venous Thrombosis in Outpatients with Cancer at a Large Community Hospital

Andrea Cervi



Windsor Regional Hospital



Standardizing Frailty Assessment for Older Adult Patients: A Clinical Application in a Community Hospital

Jennifer Clifford & Sonya Vani



Epigenetic Regulation of Injury-Induced Nociceptive Hypersensitivity

Jeffrey Dason



University of Windsor



Gene Expression and Well-Being in Social and For-Profit Entrepreneurs

Nazha Gali



University of Windsor



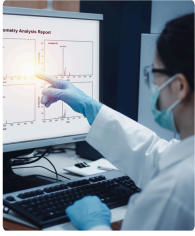
Exploring Key Predictors and Outcomes of Stigma Perception and Appraisal Among Persons With A Mental Illness in Windsor

Sebastian Gyamfi



University of Windsor





Surface-Enhanced Raman Spectroscopy for Detecting Modified Nucleosides as Cancer Biomarkers

Scott Harroun



Dynamic Modeling of Antimicrobial Resistance Drivers in Complex Matrices: Towards Predictive Frameworks for Environmental Resistance Surveillance

Opeyemi Lawal



Measuring the Efficacy of Visual Arts for Knowledge Translation in Potential Future Healthcare Professionals

Carlin Miller



Books From Birth: Supporting Early Literacy Through Hospital-Based Interventions

Gelsea Pizzuto Serra



New Detection Strategies for Post-Partum Breast Cancer Based on Organic Mixed Ionic-Electronic Conducting Polymers

Simon Rondeau-Gagné



Through the Lens of Those Who Care: Insights From Informal Caregivers of Lung Transplant Recipients

Jane Simanovski Peakovic



An Implementation/Effectiveness Feasibility Study to Assess a Home-Based Rehabilitation Exercise Program Prior to Hematopoietic Stem Cell Transplantation in a Community Setting

Sahar Khan



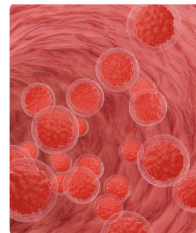
The Role of Recreation in Fostering Community Engagement and Collective Well-Being

Patti Millar



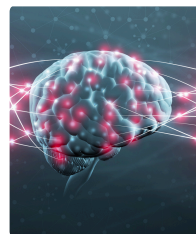
Evaluating AI-Augmented Neurosurgical Workflow: From Triage to Treatment

Abdul Naeem



Hematopoietic Abnormalities and Impact on Innate Immune Functions in Cancer

Munir Rahim



Decoding Cell-Type-Specific Neural Circuits and Elf2 α -Mediated mRNA Translation in Taste Memory Formation

Vijendra Sharma



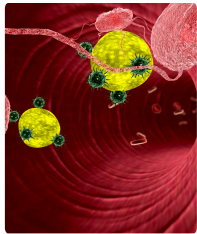
Mass Spectrometry Imaging Platform for Revealing Spatial Metabolic Alterations in Cancer Tissues

Panayiotis Vacratsis





IDEA GRANT



Improving the Care of Patients With Sickle Cell Disease at Windsor Regional Hospital

Andrea Cervi



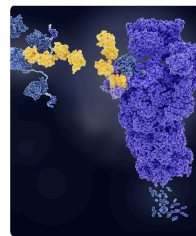
Transforming Health and Peer Support Through Inclusive Physical Exercise - A Framework for APEX in Windsor-Essex Schools

Adriana Duquette



Using Arts-Based Approaches to Create and Map the Help-Seeking Journey of Women Who Have Physically Separated From A Violent Intimate Partner

Rachel Elliott



Mapping Tumour Suppressor Partners During Cell Proliferation Using BioID

Elizabeth Fidalgo da Silva



Enhancing Medication Incident Reporting Through Clinical Nursing Education: A Framework for Safety Culture Development

Natalie Giannotti



Acceptance of A Non-Medical Solution for Chronic Constipation in Older Adults Living in Rural Ontario

Sivaruban Kanagaratnam



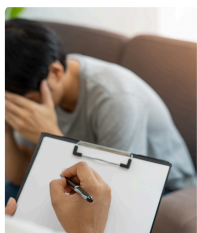
Who Is In Our Circle of Care?

Linda MacDougall



Investigating Relevant Determinants of Health in Canada: Bridging Evidence and Policy

Aloosh Medhi



The Borderline Personality Disorder Pathway: Avoiding Iatrogenic Harm Through Hospital Readmissions

Corina Velehorschi



Evaluating Outpatient Pulmonary Rehabilitation Services for Patients Living With COPD in Windsor-Essex

Jennifer Voth



Incentive GRANT



Circadian Nutrition to Prevent
Colorectal Cancer

Phillip Karpowicz



Dissecting the Biology of Disease
Progression and Drug Resistance of
Glioblastoma

Lisa Porter



THANK YOU TO OUR SPONSORS



**CANCER
RESEARCH
COLLABORATION
FUND**



**CONNECTING
FOR A CAUSE**



GLIER
GREAT LAKES INSTITUTE FOR
ENVIRONMENTAL RESEARCH
at the University of Windsor



**The Black
Scholars Institute**
at the University of Windsor

**The Tayfour-Emara
Excellence in Research
and Education Fund**



University
of Windsor

Research &
Innovation

Faculty of Arts, Humanities
and Social Sciences

Faculty of
Education

Faculty of
Human Kinetics

Faculty of
Engineering

Faculty of
Nursing

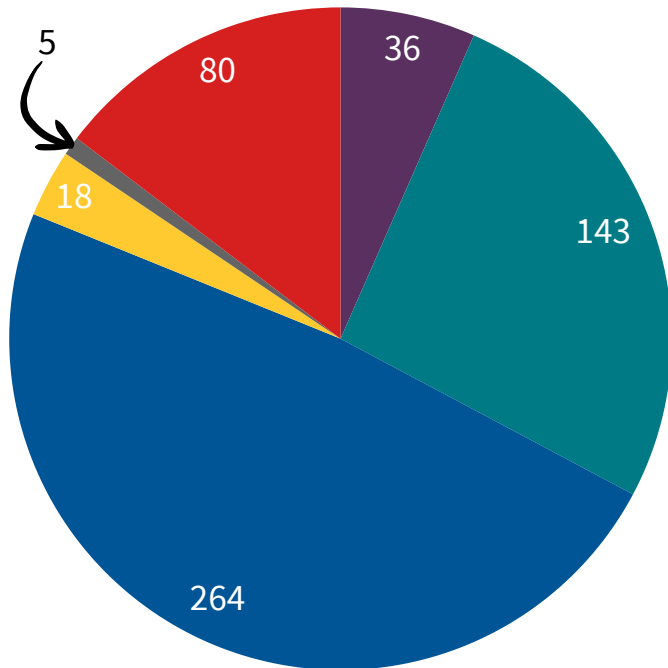
Odette School
of Business

Faculty of
Science

MEMBER SERVICES



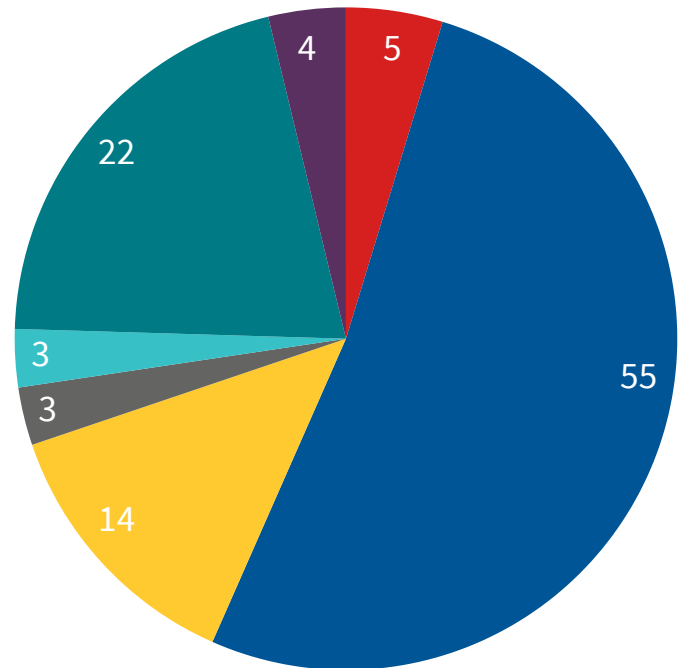
USER ACCOUNTS BY INSTITUTION



HDGH WRH/Schulich UWindsor
SCC ESHC Collaborators



MODULES COMPLETED BY CATEGORY



Clinical Research Coordinators Good Clinical Practice
Health Canada Division 5 Responsible Conduct of Research
Social and Behavioural Research Course
The Biomedical Research Ethics Tutorial Transportation of Dangerous Goods

650

REDCap Consultation
and Support Hours

369

Projects Using
REDCap

121

Total Biospecimen
Samples Acquired for
Research

13

CANTRAIN Learners



AT THE CORE OF WINDSOR-BASED SOLUTIONS



3+

Core Facilities



10+

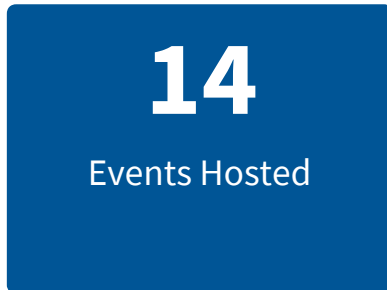
Instruments

Innovative initiative between the University of Windsor Faculty of Science, WE-SPARK Health Institute, and Great Lakes Institute for Environmental Research (GLIER) to establish a multi-disciplinary *network of care facilities* that drive cutting-edge research and development across Windsor-Essex with advanced instrumentation and high-level scientific expertise.

COMMUNITY ENGAGEMENT



*Across all social media platforms (X, Instagram, Facebook, and LinkedIn)



In the first 6 months, WE-SPARK hosted 14 events. Our staff and volunteers co-organized and supported 11 outreach events advocating for the importance of research and translating its impacts to the community. These efforts reached over **2,500** people. Critical to our success are the student interns who created new outreach activities and advanced knowledge translation for health-related projects. WE-SPARK's Social Psychology Intern, Krista Galvao transformed our interactive outreach games into online versions adding to WE-SPARK's growing collection of fun, educational knowledge-translation tools found on our [website](https://wesparkhealth.com).



Event photos can be found at: wesparkhealth.com/gallery.



ST. CLAIR
COLLEGE



University
of Windsor



Statistics reflect half the WE-SPARK 2025/26 fiscal year ending on April 30, 2026.

WE-SPARK Health Institute
401 Sunset Avenue, Windsor, ON N9B 3P4
519-253-3000 (Ext. 4394)

✉ wesparkhealth@uwindsor.ca

🌐 www.wesparkhealth.com

📘 @wesparkhealth

✉ @wesparkhealth

📷 @wesparkhealth

in @wesparkhealth