



Windsor  
Cancer  
Research  
Group

*Bridging Research & Hope*

# Impact Report

Windsor Cancer Research Group  
2012-2015

[www.windsorcancerresearch.ca](http://www.windsorcancerresearch.ca)

# Contents

01	Message from the Directors
02	Vision, Mission, Values
03	Timeline
04	Governance
05	Leadership
06	Membership
07	Core Researchers
10	Supporting Cancer Research
11	Grant Funding
12	Member Engagement
14	Building Partnerships
16	WCRG Volunteer Committee
17	Next Generation of Cancer Researchers
18	WCRG in the Community
20	WCRG Staff
21	Budget Overview
26	Thank you to our Supporters



## Message from the WCRG Directors

*“In 2011 the WCRG formalized in response to an in-depth consultation of health research priorities in the Windsor-Essex area. SHI consulting provided an impressive report that there was “significant appetite” for health research “particularly in the area of cancer”. We were excited by the opportunity to build and strengthen our clinical trials and translational research programs to better serve the community. Today, cancer patients live longer because of advancements stemming from research.*

*We have many talented professionals and students with fantastic ideas and we lie at the nexus of US and Canada, making us unique in our ability to actively interact and collaborate with US partners. We are excited and honoured to share this report of our progress from 2012 to 2015. We look forward to continuing to collaborate and building innovative research and health care excellence right here in our community.”*

DR. LISA PORTER  
*Translational Research Director*

DR. CAROLINE HAMM  
*Clinical Research Director*



### Why WCRG?

*“There is a significant appetite and unexploited opportunity for a collaborative health research enterprise in Windsor, particularly in the area of cancer.”*

- SHI Consulting Report, 2009

# WCRG Vision, Mission and Values

## Vision

To build a united community bridging cutting edge research with world-class cancer care.

## Mission

To establish Windsor-Essex as an international hub of cancer research excellence.

## Values

### Innovation

We discover new ideas and provide answers to advance cancer detection, diagnosis and treatment.

### Collaboration

We value sharing research ideas and working in association with researchers and clinical partners on both sides of the border.

### Passion

We are motivated to improve patient outcomes by fostering and advancing cancer research.

### Commitment

We are committed to improving cancer treatment and care through innovation and cross-border collaboration.



*Bridging  
Research  
and Hope*



*“As we move towards planning for a new acute care hospital, one of the biggest parts of that move is to enhance our research opportunities, capabilities and deliverables and this group does that.”*

- David Musyj, President and CEO,  
Windsor Regional Hospital

# Timeline

July, 2011

WCRG formalized as a governing body of researchers, clinicians, health care professionals, administrators and community partners who encompass our general membership.

November 16,  
2012

WCRG launched publicly as an assembly of local researchers, healthcare professionals and community partners working together to strengthen our local cancer research programs and bridge collaborations with our neighbouring cancer centres.

November 17,  
2012

WCRG hosted its first biennial research conference “*Bridging Research and Hope*”. Over 100 research scientists, clinicians, nurses, administrators and students came together to share their cancer research findings in the areas of basic science, clinical trials and patient care.

October 7,  
2013

WCRG launched PASSPORTS, a campaign to establish a cancer research initiative that fosters cross-border collaborations and lays the foundation for international access to clinical trials for local cancer patients. PASSPORTS was supported by donations from Caesars Windsor, Windsor Regional Hospital and the University of Windsor’s Cross Border Institute.

March 19,  
2014

WCRG established a student volunteer group that is committed to connecting the WCRG with the Windsor-Essex community. Along with our newsletters, website and social media, we are focused on enriching local public education on cancer research and its advancements within our own community.

November 22,  
2014

WCRG hosted its 2nd International Cancer Research Conference bringing together 150 scientists, clinicians, nurses, research associates, administrators and students from Windsor-Essex, London and Michigan to share their cancer research discoveries.

May 9, 2015

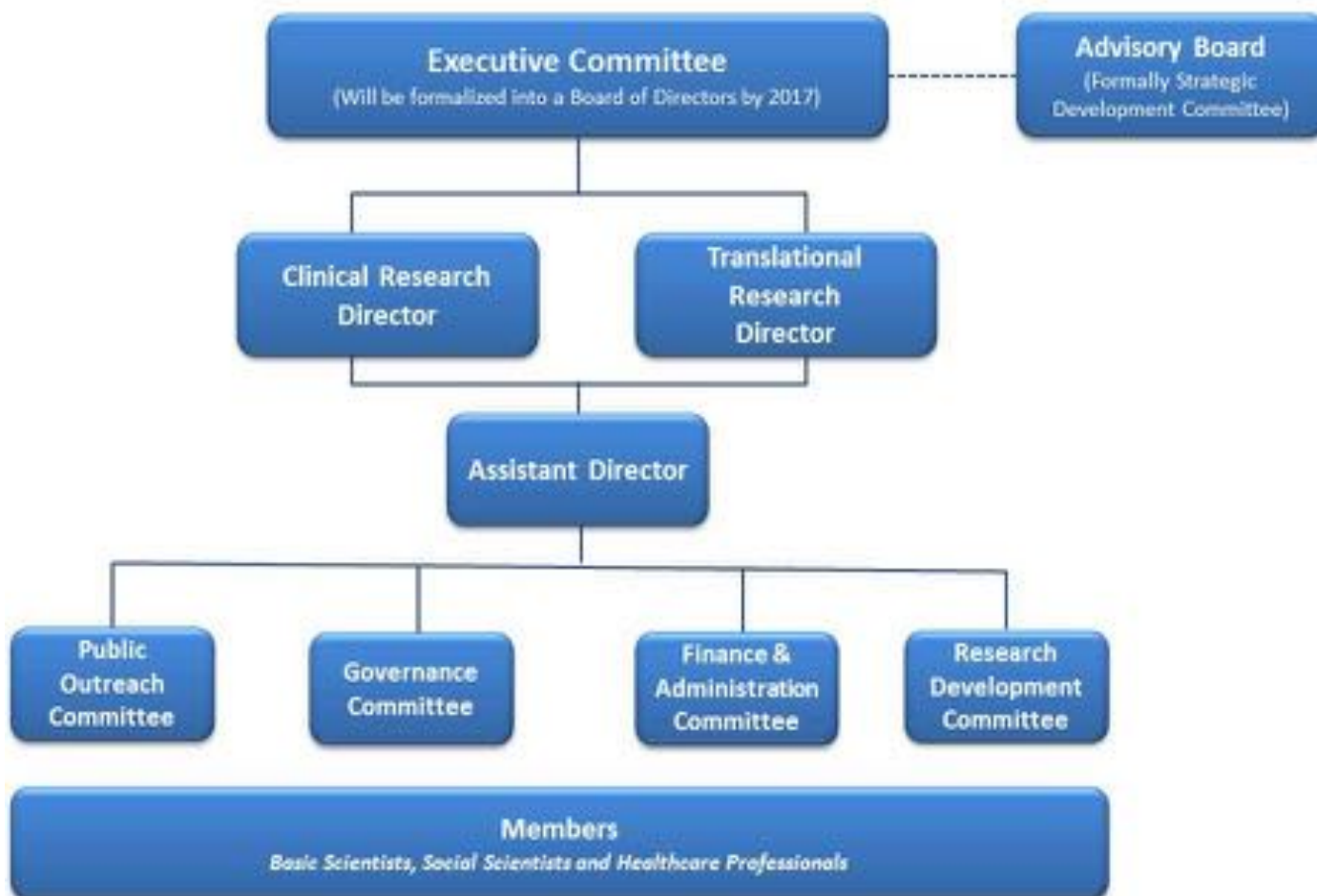
WCRG hosted “*Cheers to Hope*”, an event to recognize and celebrate the WCRG institutional, corporate and community supporters.

2016

WCRG looks ahead to establishing collaborative research clusters, the 3rd international cancer research conference and a new cancer research community education program.

# Governance

In September 2014, under the guidance of the Governance Committee, the WCRG Executive approved their first strategic plan. This plan is a living document that will continue to be modified and updated as the WCRG moves forward. It can be found on the [WCRG website \(www.windsorcancerresearch.ca\)](http://www.windsorcancerresearch.ca).



## Governance Committee

Ron Truant, Chair (2014 - 2016)

Karen Behune Plunkett (2012 - Present)

Angela Snary (2015 - Present)

Ned Colovic (2015 - Present)

Marlys Koschinsky (2012 - 2015)

Michael Boffa (2012 - 2015)

*'I have been impressed with the progress and continuing efforts of this committed group. There is a clear understanding of the importance of cancer research and how progress will positively impact our community. Providing strong governance ensures successful outcomes for all.'*

Karen Behune Plunkett, Principal, Pinpoint,  
Governance Committee Member

# Leadership

## Advisory Committee

- **Karen Behune Plunkett**, Principal, Pinpoint
- **Jeff Casey**, Owner, Snapd Windsor
- **Ned Colovic**, Retiree
- **Michael Dufresne**, Administrator, Seeds4Hope Research Grants Program
- **Marta Leardi-Anderson**, Executive Director, Cross Border Institute
- **Lee McGrath**, Director, Business Retention and Expansion, WEEDC
- **David Musyj**, CEO, Windsor Regional Hospital
- **Federica Nazzani**, President, Capital Assist Inc.
- **Tom Porter**, Lawyer, Mousseau DeLuca McPherson Prince, LLB
- **K.W. Michael Siu**, VP, Research and Innovation, University of Windsor
- **Angela Snary**, President, Avid Quality Group Inc.
- **Ron Truant**, Owner, Trumor Management Ltd

## Executive Committee

- **Lisa Porter**, University of Windsor, WCRG Translational Research Director
- **Caroline Hamm**, Windsor Regional Hospital, WCRG Clinical Research Director
- **Karen Metcalfe**, WCRG Assistant Director
- **Dora Cavallo-Medved**, University of Windsor, WCRG Public Outreach Chair
- **Ron Truant**, Community Partner, WCRG Governance & Finance Chair
- **Krista Naccarato**, Windsor Regional Hospital, WCRG Executive Member
- **Jeffrey Zonder**, Karmanos Cancer Institute, WCRG Executive Member

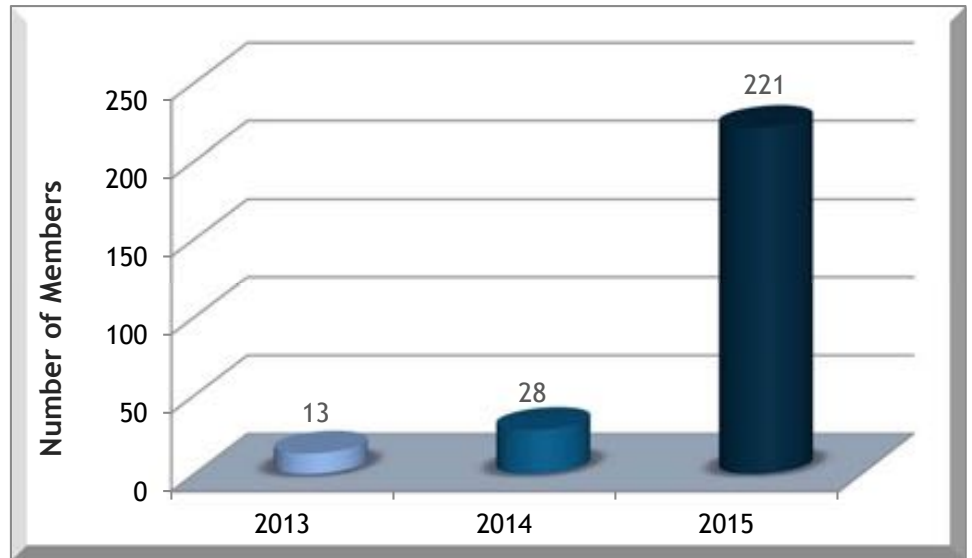
## Past Executive Members

- **Chris Busch**
- **Elizabeth Dulmage**
- **Maher El-Masri**
- **Marlys Koschinsky**
- **Bulent Mutus**
- **Tom Porter**
- **Heather Pratt**
- **Andrew Swan**



# Membership

## Growth



## Members Affiliations

University of Windsor

Windsor Regional Hospital

Hotel Dieu Grace Healthcare

Schulich School of Medicine & Dentistry

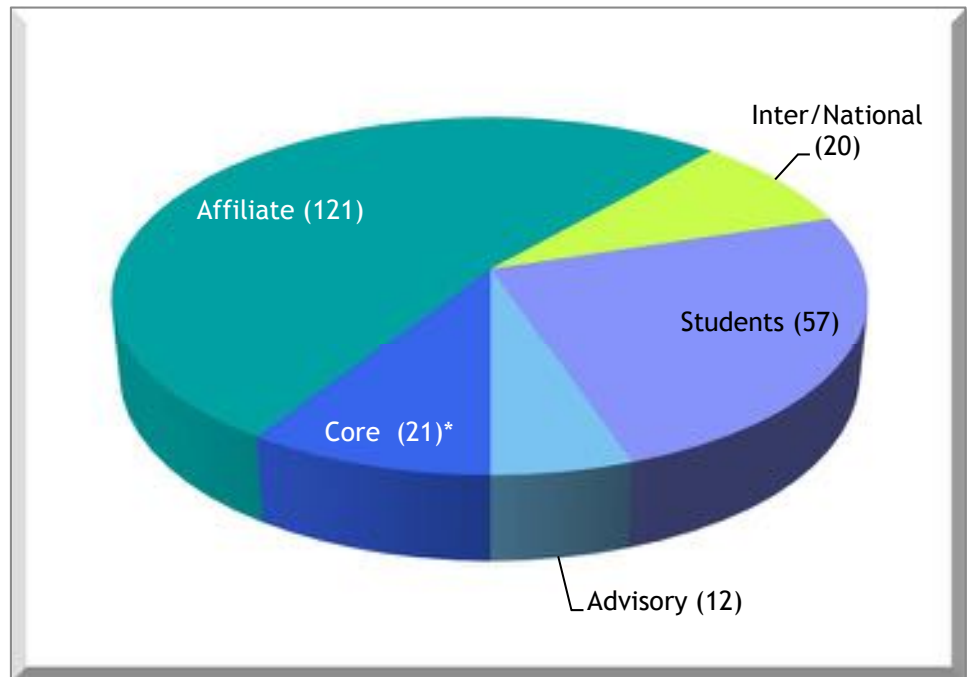
St. Clair College

Henry Ford Health System

Karmanos Cancer Institute

Wayne State University

## 2015 Members



*“A sincere thank you for initiating the adjunct professor application process and to Luis Rueda for sponsoring my application. Without you, none of this was possible.”*

- Junaid Yousuf,  
Radiation Oncologist,  
WRH Cancer Program

\* Core members include 17 local researchers who are active in the cancer field (PI/co-applicant on cancer grants/clinical trials, publishing in the cancer field), hold an academic appointment AND have contributed significantly to WCRG. They are highlighted on pages 7-9.



# Core Researchers

24 Cancer Grants

Clinical Trials 3 Patents

Publications\* 96



**DR. MICHAEL BOFFA, PHD**  
Biochemistry  
University of Windsor

**Expertise:** Role of mediators of the coagulation & fibrinolysis cascades in the cancer microenvironment & metastatic progression; mouse & zebra fish models



**DR. DORA CAVALLO-MEDVED, PHD**  
Biological Sciences  
University of Windsor

**Expertise:** Role of tumour microenvironment in cancer aggressiveness & progression; 3-dimensional cell modeling



**DR. MAHER EL-MASRI, PHD**  
Nursing  
University of Windsor

**Expertise:** Health care access & delivery of care; disease prevention & health promotion; clinical & epidemiologic research methods



**DR. AKMAL GHAFOOR, MD**  
Medical Oncology  
Windsor Regional Hospital Cancer Program

**Expertise:** gastrointestinal & gynecological malignancies



**DR. CAROLINE HAMM, MD**  
Medical Oncology  
Windsor Regional Hospital Cancer Program

**Expertise:** breast, leukemia, lymphomas, & melanoma

\*Total number of books, book chapters, peer-reviewed journal articles



**DR. KHALID HIRMIZ, MD**

Radiation Oncology

Windsor Regional Hospital Cancer Program

**Expertise:** breast, gastrointestinal, genitourinary, lung malignancies, & CNS tumours



**DR. JOHN HUDSON, PHD**

Biological Sciences

University of Windsor

**Expertise:** Role of polo-like kinases in malignancy, DNA damage & development; mouse & xenopus genetics; epigenetics



**DR. SINDU KANJEEKAL, MD**

Medical Oncology

Windsor Regional Hospital Cancer Program

**Expertise:** hematologic, genitourinary & gastrointestinal malignancies



**DR. AMIN KAY, MD**

Medical Oncology

Windsor Regional Hospital Cancer Program

**Expertise:** breast, lung, brain & hematological malignancies

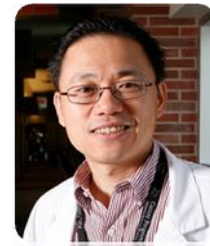


**DR. SWATI KULKARNI, MD**

Medical Oncology

Windsor Regional Hospital Cancer Program

**Expertise:** breast, lung, brain & head & neck malignancies



**DR. MING PAN, MD**

Radiation Oncology

Windsor Regional Hospital Cancer Program

**Expertise:** lung, genitourinary, gastrointestinal, skin & head & neck malignancies



**DR. LISA PORTER, PHD**  
Biological Sciences  
University of Windsor

**Expertise:** Cell cycle checkpoints in stem cell biology, the initiation/progression of disease and responsiveness to treatments; mouse & zebrafish genetics; patient xenograft & organoid models.



**DR. LUIS RUEDA, PHD**  
Computer Science  
University of Windsor

**Expertise:** Develops machine learning & bioinformatics approaches to study diverse aspects of cancer biology. Applications include detection of biomarkers in cancer subtypes and progression.



**DR. REDA SAAD, MD**  
Pathology  
Windsor Regional Hospital

**Expertise:** gynecologic, breast pathology & cytopathology



**DR. KEN SCHNEIDER, MD**  
Radiation Oncology  
Windsor Regional Hospital Cancer Program

**Expertise:** CNS tumours, head & neck, breast, gynecologic malignancies & sarcoma



**DR. ANDREW SWAN, PHD**  
Biological Sciences  
University of Windsor

**Expertise:** Role of specific cell cycle mediators in genome instability & cancer initiation/progression; drosophila model systems & genetics approaches



**DR. OTIS VACRATIS, PHD**  
Chemistry & Biochemistry  
University of Windsor

**Expertise:** Integrates mass spectrometry & cell biology techniques to study enzymes involved in cancer initiation & progression

# Supporting Cancer Research

WCRG facilitates and supports cancer researchers, and since 2013 we have:

- Aided in the writing and submission of 22 grants
- Developed a list of **funding opportunities** available on the WCRG website
- Created a Cancer Research Peer Review Panel
- Established multi-disciplinary working groups in the areas of:

## Personalized Cancer Care

Enhancing health outcomes through patient stratification approaches by integrating evidence-based medicine and precision diagnostics into clinical practice

## Social/Cultural Influences on Cancer Care

Improving the quality of cancer detection and treatment within our community and surrounding areas



## Physical Environment and Cancer

Understanding the changing roles of the physical environment in the initiation of cancer and prevention strategies

## Inflammation and Cancer

Supporting the discovery and validation of common biomarkers, therapeutic targets, and resolution of inflammatory mechanisms

## Peer Review Committee

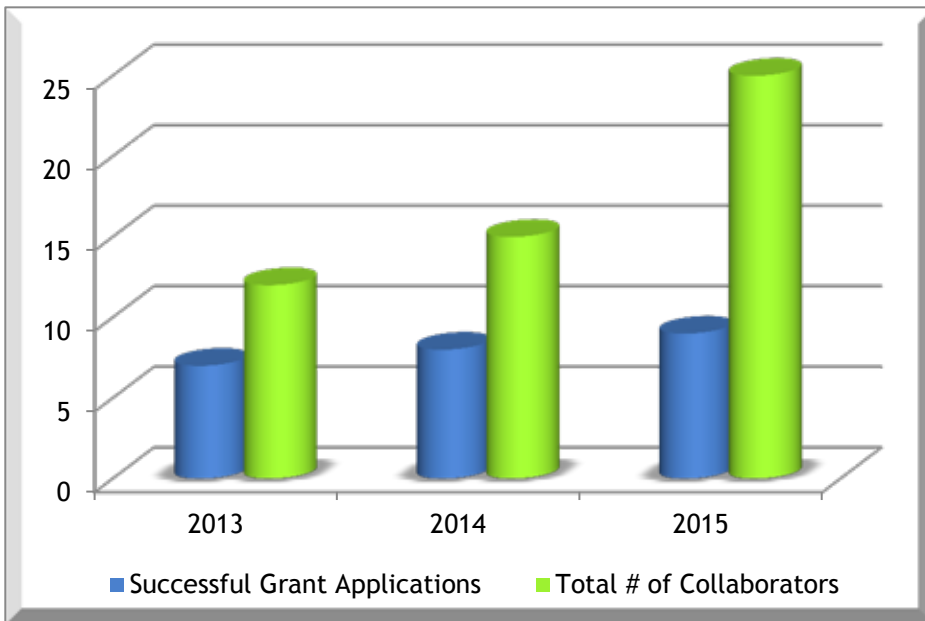
Dora Cavallo-Medved, PhD  
Maher El-Masri, PhD  
James Gauld, PhD  
Caroline Hamm, MD  
Josee Jarry, PhD  
Sindu Kanjeekal, MD  
Amin Kay, MD  
Lisa Porter, PhD  
Luis Rueda, PhD  
Reda Saad, MD  
Andrew Swan, PhD  
Otis Vaccratsis, PhD

*“Thank you again so very much for your invaluable help in this process. I learned a tremendous amount, most importantly about the power of collaboration and trust. I deeply appreciate all the help that you have given me.”*

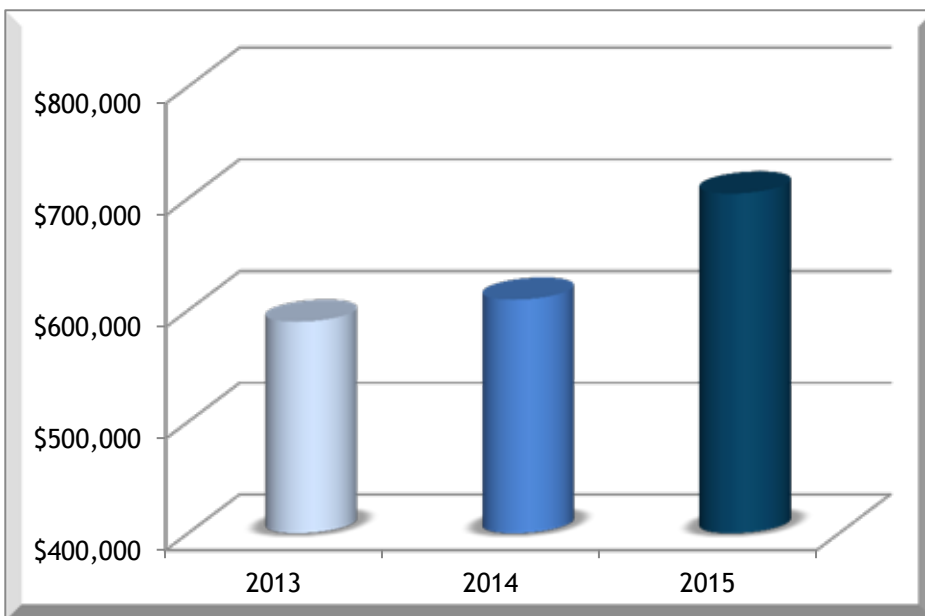
Josée L. Jarry,  
Department of Psychology  
University of Windsor

# Grant Funding

## Success and Collaboration



## Annual Cancer Research Funding



\* supporting WCRG annual cancer-related funding



## Funding Agencies\*

Brain Tumour Foundation of Canada

Canadian Cancer Society Research Institute

Canadian Institutes of Health Research

Cancer Research Society

Jesse and Julie Rasch Foundation

Katelyn Bedard Bone Marrow Association

Lotte & John Hecht Memorial Foundation

# Member Engagement

## Biennial Conferences

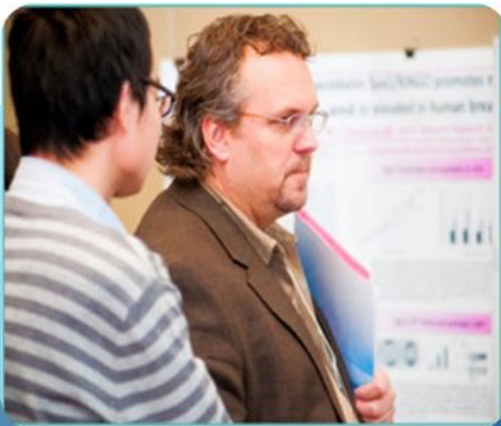


2012

2	Keynote Speakers	2
8	Sponsors	14
16	Institutions	18
14	Oral Presentations	16
44	Posters	47
94	Attendees	147



2014



*“Great job with the conference! I was proud to be a part of it.”*

~ Ronny Drapkins, Director,  
Penn Ovarian Cancer Research Center

*“Congratulations on a very successful conference. I only heard praise from my colleagues who attended and the media coverage was great - Kudos to the Planning Committee!”*

~ Maher El Masri, Professor,  
University of Windsor, Faculty of Nursing



## Member Newsletter

The WCRG Member Newsletter, “WCRG Matters” is circulated to help the cancer research community stay in touch. We provide updates on progress, news, member accomplishments, funding opportunities and upcoming events.



## Committees

Executive

Finance & Administration

Governance

Public Outreach

Research Development

Conference Planning

*“As an Executive member and Chair of Public Outreach, I can be directly involved in translating research into public education for our community. Working with researchers, healthcare professionals and students who all share a common goal and passion for cancer research is a truly rewarding experience.”*

Dora Cavallo-Medved, PhD  
Executive Member & Chair  
Public Outreach

## Meetings

All WCRG meetings are organized to drive the strategic plan forward. Agendas are prepared and followed, priorities and next steps are set, and outcomes are measured. The Chair of each committee reports progress directly to the Executive Committee.



# Building Partnerships

A strategic priority of WCRG is to work with our partners to build collaborative research networks.

**Working together to discover new cancer biomarkers**

*By strengthening clinical and research partnerships Drs. Hudson, Hamm, Kanjeeval and Shum have revealed that up to 70% of some blood cancers have altered DNA marks that can be detected in bone marrow aspirates. These are routinely used for hematopoietic malignancies and could be a useful tool to predict clinical outcomes for patients and help guide clinical decisions.*



*“By promoting collaboration and cooperation the WCRG brings the clinical expertise together with researchers at the University of Windsor. Cancer is a very complex disease, it touches virtually every family. We need to put our brains together so that the total contribution is larger than the sum of individual contributions. Collaboration is the key.”*

- K.W. Michael Siu, VP Research and Innovation, University of Windsor



# PASSPORTS

In October 2013, WCRG launched its PASSPORTS campaign to foster cross-border collaborations and lay the foundation for international clinical trial access for Windsor-Essex cancer patients. This campaign received strong support from the community and achieved its goals

Supported by 3 Community Partners



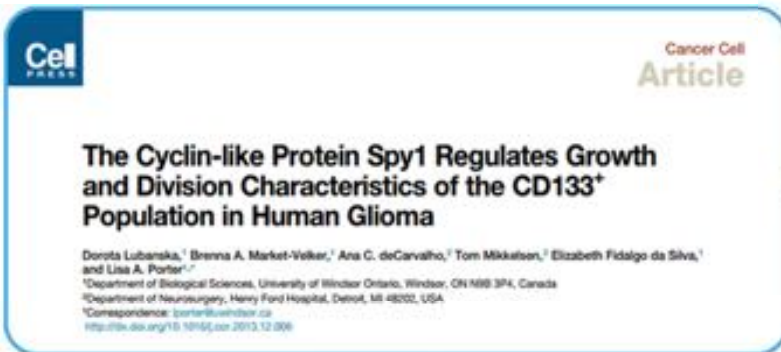
Enabled the development of a Collaboration Toolkit

Set the stage for future research



## Targeting Brain Tumour Resistance

A small population of cells that are resistant to radio- and/or chemotherapy exist in some brain cancers and drive the processes of relapse following treatment. Our PASSPORTS campaign enabled researchers from Windsor and Henry Ford Health System to work together to discover one protein that may be a valuable target in the treatment of these aggressive cancers.





## WCRG Volunteer Committee

**PUBLIC HEALTH ADVOCATES - PROFESSIONAL - EFFECTIVE COMMUNICATORS**



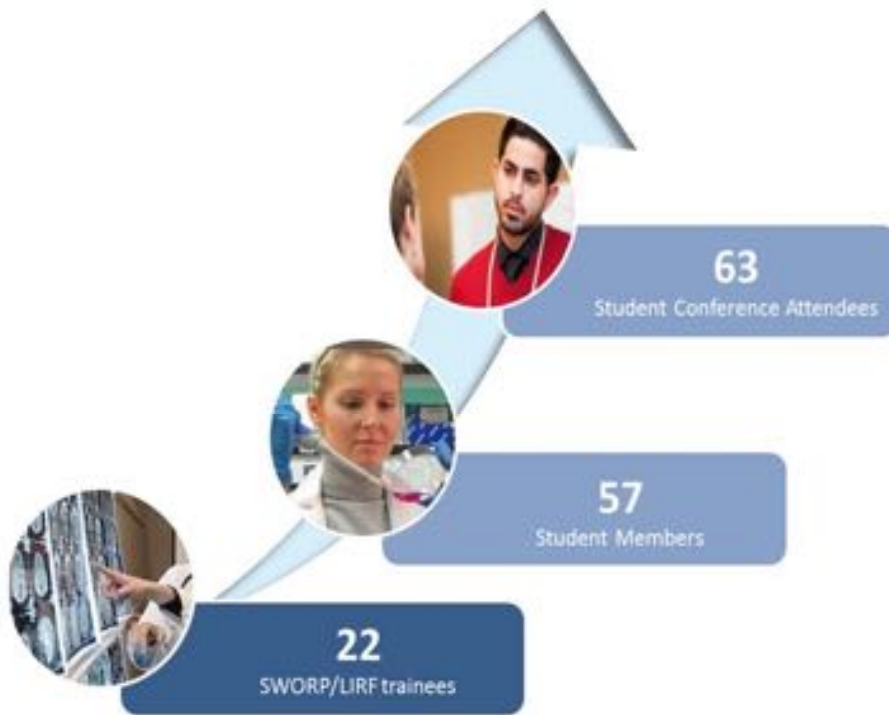
Our volunteers donate their time and efforts and are committed to the mission and vision of the WCRG. They are actively involved in all WCRG events and are educated on the full spectrum of translational cancer research. WCRG volunteers develop new skills, apply academic knowledge, build their resumes, and expand professional and social networks. Our student volunteers are a vital component of WCRG's success and valued members of our team.

*“Being part of WCRG was incredibly rewarding. I saw first-hand, the advancements that can be made when researchers and clinicians work together. I am so proud to have been a part of an organization that is pushing Windsor-Essex forward!”*

- Marisa Market, MD/PhD Candidate, Volunteer 2014-15

# Next Generation of Cancer Researchers

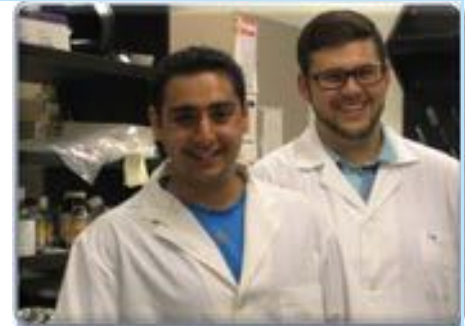
WCRG members work with students and trainees to build cancer expertise research. Numerous awards, publications and scholarships have been earned. We highlight here only some of the outstanding work done with our core researchers.



**Dr. Yifeng Li, School of Computer Science**

**2014 Governor General's Gold Medal Recipient**

Yifeng completed his PhD under the supervision of Drs. Alioune Ngom and Luis Rueda. Yifeng advanced aspects of bioinformatics that can improve how we analyze data from cancer patients.



## Undergraduate Success

University of Windsor Undergraduates Samer Jassar and Santo Spencer Briguglio. Awarded Research Studentships from the Brain Tumour Foundation of Canada (2012-2015) to study novel approaches for treating brain cancer patients.



University of Windsor PhD students Bre-Anne Fifield and Rosa Ferriauolo awarded prestigious Canadian Breast Cancer Foundation Fellowships for their breast cancer work.



# WCRG in the Community

## Community Newsletter

The WCRG Community Newsletter, “The Bridge” is circulated to keep the public informed about local cancer research.



What you find on the WCRG Website

[www.windsorcancerresearch.ca](http://www.windsorcancerresearch.ca)

Collaborator’s Corner

News

Research

Events

*“Being part of WCRG has confirmed for me how much I love connecting with the community, especially kids. Passing on knowledge to the younger generation is incredibly rewarding. My experiences with WCRG have made me realize why I chose to science in the first place.”*

- Ahmed Salim, Biological Sciences, undergraduate student

## Connecting with the Public

An important goal for WCRG is to make cancer research more accessible to the community. We are able to interact directly with some of the public through participation in public events like Science Rendezvous and Research Showcase.



## Community Education Series

Over the past 2 years, WCRG has collaborated with community partners to provide education opportunities for the general public, primary care physicians, WCRG members and high school students.



## Cheers to Hope

On May 9, 2015, over 130 people gathered at Walkerville Brewery to celebrate those who have supported WCRG over the past year:

- Windsor Regional Hospital
- University of Windsor
- Cross Border Institute
- Caesars Windsor
- Bear Construction & Engineering
- Ron Truant



*“On behalf of all the beneficiaries - which no doubt increases daily - thank you all for what you do.”*

- Norma Brockenshire, Board Member and Past President Windsor Essex County Cancer Centre

# WCRG Staff

*"I am grateful for the opportunity WCRG provided, I gained valuable experience. My career as a professional definitely got a kick start thanks to you"*

- Rebecca Williams, PhD WCRG/ORIS  
Commercialization Research Associate



## **KAREN METCALFE, MA**

Assistant Director

*January 2013 to Present*

Karen has a Master's degree in Sociology from the University of Windsor. Before taking on her current role with WCRG, Karen worked for over twelve years as a Senior Consultant at Pitters Associates Inc., a business management consulting company in Toronto, Ontario. Karen volunteers her time with a number of local not-for-profit community groups and has been a co-editor and reviewer of resources developed for people diagnosed with brain tumours. In 2014, Karen took over as Coordinator of the Brain Tumour Foundation of Canada's main fundraising event in Windsor.

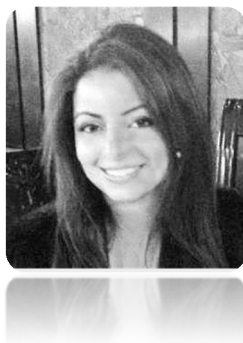


## **REBECCA WILLIAMS, PHD**

WCRG/ORIS Commercialization Research Associate

*September 2014 - August 2015*

Rebecca has a PhD in Molecular Ecology from the University of Windsor as well as a Bachelors of Education. While pursuing her studies, Rebecca worked as a Graduate Teaching Assistant and a S.T.E.P.S (Skills to Enhance Personal Success) coordinator. She became interested in cancer research after volunteering for the Katelynn Bedard Bone Marrow Association and participating in the Relay for Life. While working with WCRG, Rebecca was housed in the Office of Research and Innovation where she focused a portion of her time on advancing commercialization of cancer-related innovations and products.



## **SALMA ALJANNATI**

Cross Border Health Research Associate

*Part time: September 2014 - December 2014*

After completing her undergraduate degree in Biological Sciences from the University of Windsor, Salma moved to Toronto where she worked for major employers such as Bayer HealthCare Pharmaceuticals and the Princess Margaret Cancer Centre, as a *Clinical Research Coordinator* and more recently, *Clinical Data and Regulatory Coordinator*. On returning to Windsor, Salma worked with WCRG to kick off our PASSPORTS campaign before moving on to full time employment.



## Budget Overview

The following budget overview reflects the revenue for WCRG during the period of 2012 - 2015 and the expenses from 2014-2015. Finances for that period were overseen by the Finance & Administration Committee, Chaired by Mr. Ron Truant. On February 16, 2016, Ron passed away and WCRG lost a valued member, mentor and friend. We are thankful for his friendship and guidance and will carry forward everything he taught us in the years to come

Mr. Truant was a successful local entrepreneur, Principal of Trumor Management Ltd. and previous CFO of the Electromac Group of Windsor. Ron was a Chartered Professional Accountant, was on the Board of Directors at Hotel-Dieu Grace Hospital since June 2013 and previously served on the Windsor Regional Hospital Board. Ron and his wife Noella were champions of the local Hospice, including building the hospice pavilion and working on the Hospice fundraising plan. They were recognized for their dedication with the Stuart & Marjorie Leschild Award for Excellence in Fundraising. Ron had been Chair of the WCRG Governance and Finance Committees since 2013 and had been an active member of the WCRG Executive. Ron was recognized for his significant contribution to WCRG at the Cheers to Hope event.



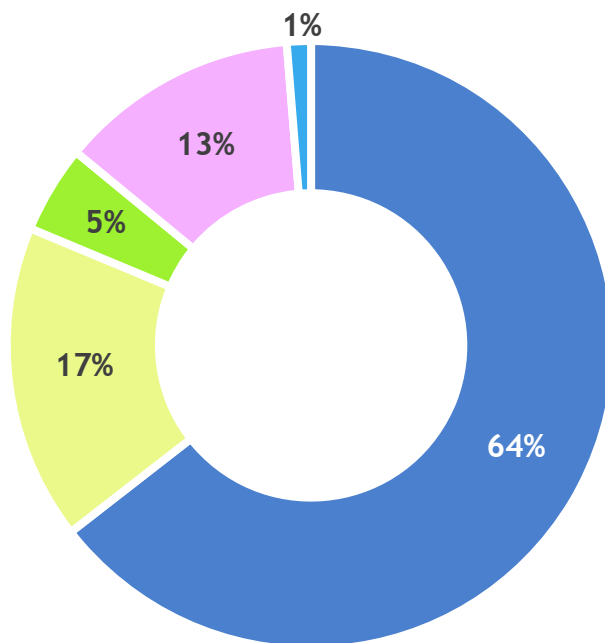
Ron being recognized at Cheers to Hope



Mr. Ron Truant

*Photograph provided courtesy of snapd Windsor*

# WCRG Total Revenue (2012-2015)

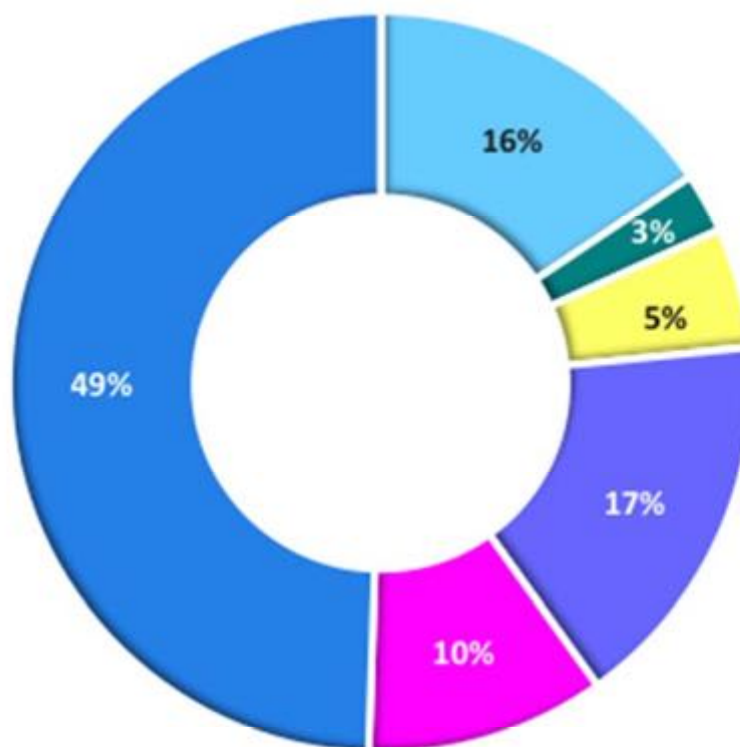


- University of Windsor\*
- Windsor Regional Hospital
- WCRG Conferences
- Corporate Support
- Individual donations

Categories	Revenue Allocations	Date	Amount	
University of Windsor	Porter Grant	2012	\$30,000	
	UWindsor, Benefits Transfer	2012	\$5,000	
	UWindsor, Dean of Science	2012	\$10,000	
	UWindsor, Office of VP Research	2012	\$32,000	
	Procure	2013	\$20,000	
	UWindsor, Cross Border Institute	2014	\$25,000	
	UWindsor, Cross Border Institute	2015	\$70,000	
	Windsor Regional Hospital	Windsor Regional Hospital	2013	\$25,000
	Windsor Regional Hospital	Windsor Regional Hospital	2014	\$25,000
WCRG Biennial Cancer Research Conferences	Conference 2012	2012	\$3,282	
	Conference 2014	2014	\$10,620	
Corporate Support	Pharma - Roche (public ed.)	2012-2014	\$3,000	
	Bear Construction & Eng.	2015	\$10,000	
	Caesars Windsor	2013	\$25,000	
Individual Donations	Medved Family	2015	\$400	
	Personal Donations	2012-2015	\$900	
	Hon Don	2015	\$2,525	
<b>Total</b>			<b>\$297,727</b>	



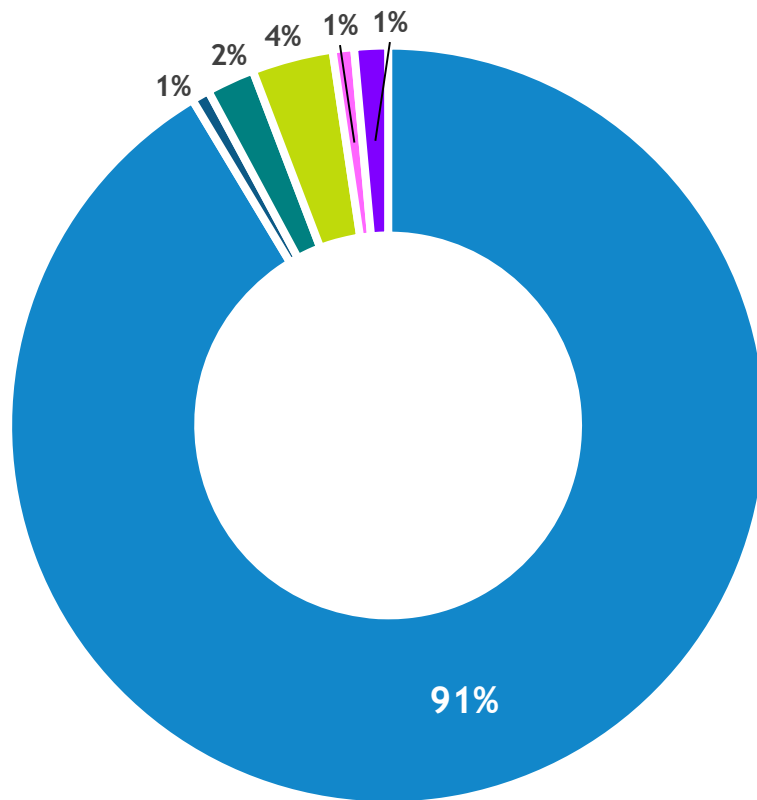
# WCRG Total UWindsor Revenue (2012-2015)



- Porter Grant
- UWindsor, Benefits Transfer
- UWindsor, Dean of Science
- UWindsor, Office of VP Research
- Procure
- UWindsor, Cross Border Institute

UWindsor Revenue Allocations	Date	Amount
Porter Grant	2012	\$30,000
UWindsor, Benefits Transfer	2012	\$5,000
UWindsor, Dean of Science	2012	\$10,000
UWindsor, Office of VP Research	2012	\$32,000
Procure	2013	\$20,000
UWindsor, Cross Border Institute	2014-2015	\$95,000
<b>TOTAL</b>	<b>2012-2015</b>	<b>\$192,000</b>

# WCRG Annual Cost Summary (2014-2015)



- WAGES & BENEFITS
- OFFICE SUPPLIES & EXPENSE
- PRINTING
- SEMINARS & MEETINGS
- TELEPHONE/VIDEO-CONFERENCE
- MISCELLANEOUS

Cost Categories	Amount
Wages & Benefits	\$76,650
Office Supplies & Expense	\$636
Printing	\$1,725
Seminars & Meetings	\$2,900
Telephone/Video-Conference	\$765
Miscellaneous	\$1,200
<b>Total</b>	<b>\$83,876</b>

# WCRG Annual Cost Detailed (2014-2015)

<b>EXPENSES</b>	<b>Notes</b>	<b>Base *</b>
<b><u>WAGES &amp; BENEFITS</u></b>		
Assistant Director	Full-time position	\$70,000.00
Benefits	9.50%	\$6,650.00
		76,650.00
<b><u>PROFESSIONAL DEVELOPMENT</u></b>		
		-
<b><u>OFFICE SUPPLIES &amp; EXPENSE</u></b>		
Pens, folders, etc		\$150.00
Constant Contact	\$28/month x 12 months	\$336.00
Printing cartridges		\$150.00
		636.00
<b><u>PRINTING</u></b>		
Promotional Materials	Brochures, banners, folders, volunteer shirts, etc	\$1,000.00
WCRG Report	Demonstration of collaborative research	
Display materials	Items for community events, seminars	\$500.00
Images	Purchasing of images for promo materials	\$75.00
Business cards		\$150.00
		1,725.00
<b><u>SEMINARS &amp; MEETINGS</u></b>		
Seminar series refreshments	6 per year x \$250	\$1,500.00
Executive meeting refreshments	8 meetings/year x \$50	\$400.00
Volunteer meetings	Year end appreciation meeting with pizza	\$200.00
Seeds4hope Community Series	Contribution to portion of the event (\$400 x 2/yr)	\$800.00
		2,900.00
<b><u>TELEPHONE/VIDEO-CONFERENCE</u></b>		
OTN links	\$80/hr (international) (estimating 8 hours)	\$640.00
Long distance	Estimate	\$125.00
		\$765.00
<b><u>MISCELLANEOUS</u></b>		
Miscellaneous expenses	Estimate at \$100/mo	\$1,200.00
		\$1,200.00
<b>TOTAL</b>		<b>\$83,876.00</b>

# Thank you to our supporters

Today, cancer patients live longer because of advancements stemming from research. WCRG is excited to build and strengthen our current cancer research program to better serve the patients of the Lake Erie-St. Clair region. The devotion, energy and enthusiasm of our members, our volunteers and all those in the community that have supported us is key to our continued growth and our ability to make a difference in the fight against cancer. *Thank you, we couldn't do it without you!*

## Corporate and Foundation Donors



University  
of Windsor

Office of Research & Innovation Services, and  
Faculty of Science



WINDSOR  
REGIONAL  
HOSPITAL

OUTSTANDING CARE – NO EXCEPTIONS!



CROSS-BORDER  
INSTITUTE



"We are very impressed by the efforts of the WCRG and very happy to support their mission and vision to build cancer research excellence in our community."

- David Medved, P.Eng., President and CEO,  
Bear Construction and Engineering Inc.

## Personal Donors

Antonella Bachetti  
Diletta Bello & Jeff Casey  
Michael J. Dufresne  
Fran Ferguson  
Caroline Hamm  
Margaret Johnson & Dr. Ralph Johnson  
Federica Nazzani  
Marilyn Ursulak  
Valentina & John Velijanovski

## Donations in Memory of

Tomo Medved  
John P. Klassen

### Contact Us

For more information contact WCRG's Assistant Director, **Karen Metcalfe** at:

Telephone: 519.996.6105  
E-mail: [wcrg@uwindsor.ca](mailto:wcrg@uwindsor.ca)

Visit us online [www.windsorcancerresearch.ca](http://www.windsorcancerresearch.ca)

